

TH0140T1 Threshold Detector

0.1-4.0 GHz Broadband



Technical Characteristics

Product Features

High reliability hermetically sealed
10 dB dynamic range: -20 dBm to -10dBm
Propagation delay: 10 nS typical
TTL logic output
Minimum pulse width: 50 nS typical
Temperature stability: 1.0 dB Typ., 3 dB above threshold setting
Threshold setting internally fixed or external voltage
DC power (no load): ± 5 VDC @ 100mA max.

Max. Ratings

Storage Temperature:	-65°C to +125°C
Operating Temperature:	-55°C to +90°C
Maximum input power:	+25dBm Peak, +20dBm CW

Product Export Classification

ECCN: EAR99 (Unless otherwise specified)
HTS: 8542330000

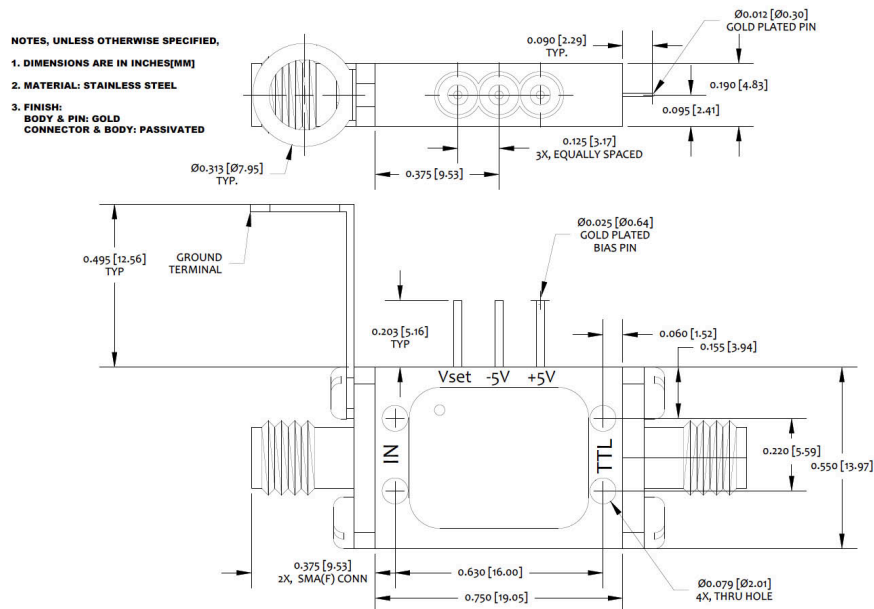
Electrical Specifications

Parameters	Freq. (GHz)	Min.	Typical	Max.	Units
Frequency Range	0.1 to 4.0				GHz
Threshold Variation			0.75		+/- dB
VSWR			2.6:1		

NOTES:

1. Response time for input change > 3dB above CW threshold. R(load)=1M Ω , C(load)=100pF

Outline Drawing

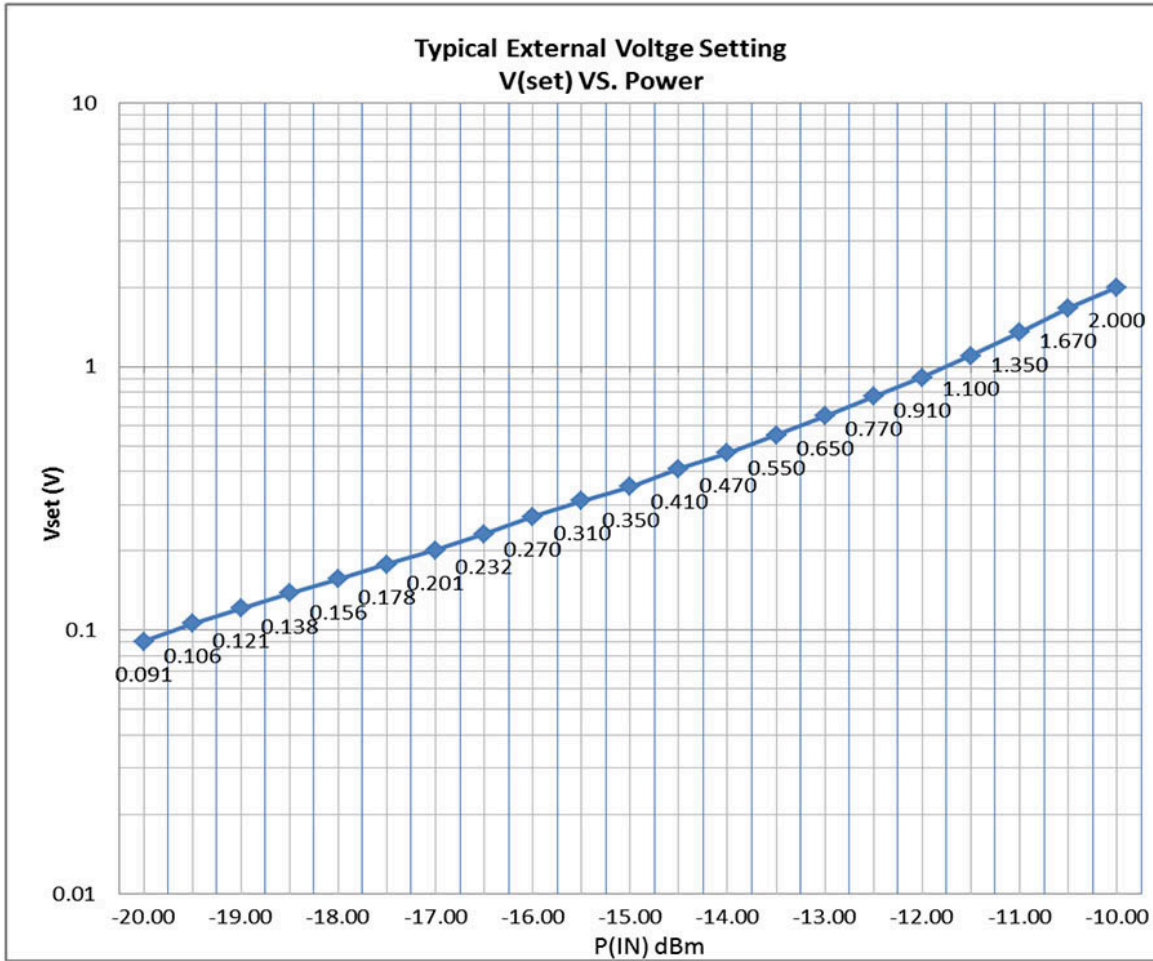


TH0140T1 Threshold Detector

0.1-4.0 GHz Broadband



Typical Regulated Vset Curve @ +25°C



DISCLAIMER: Subject to change without notice. Rev(A) 01/16/20